

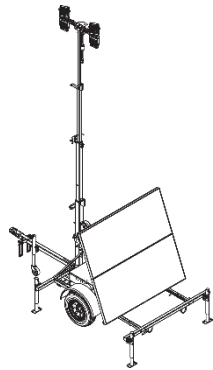
WANCO Solar Light Tower Models

Small Model

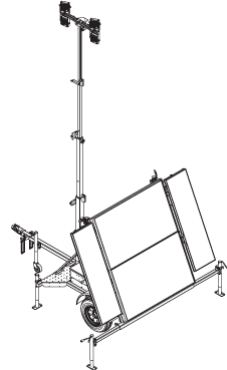


600-watt solar array

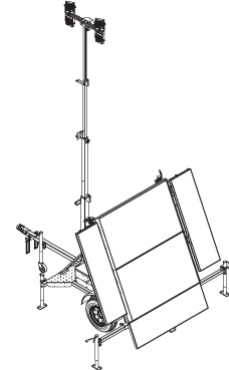
Medium Models



600-watt solar array

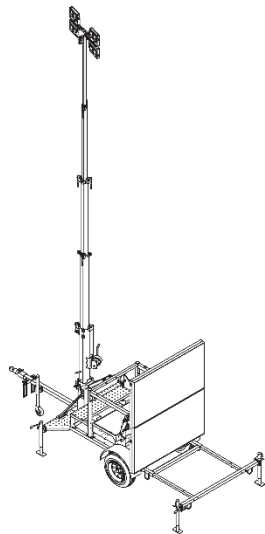


900-watt solar array

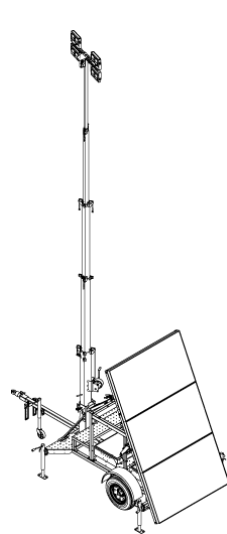


1050-watt solar array

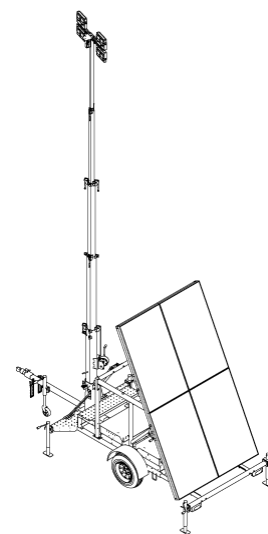
Large Models



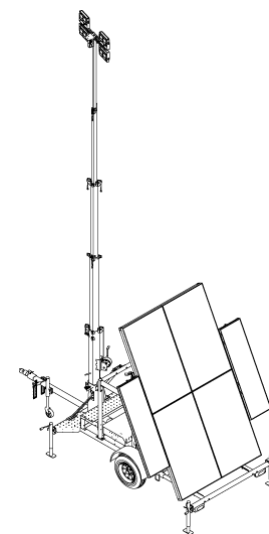
600-watt solar array



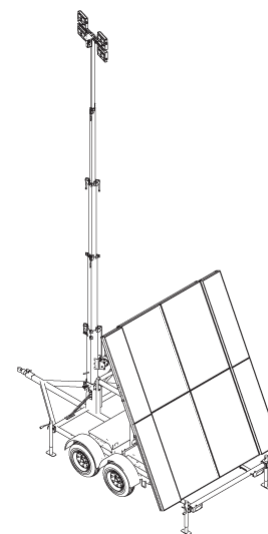
900-watt solar array



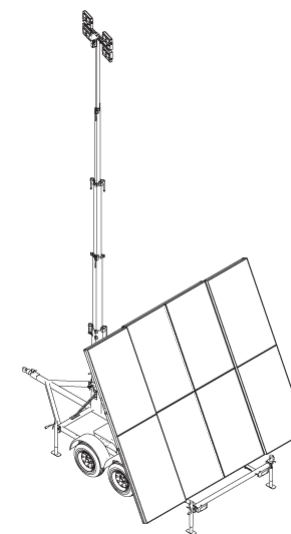
1200-watt solar array



1500-watt solar array



1800-watt solar array



2400-watt solar array

WANCO Solar Light Tower Feature Comparison

Features

Tower	Small	Medium	Large	Large Wide
20-foot telescoping tower	●	●	-	-
30-foot telescoping tower	-	-	●	●
Hand-operated winch	●	●	●	-
Electric winch	-	○	○	●
LED light fixtures, standard	4 × 60W	4 × 60W	4 × 60W	4 × 100W
LED light fixtures, options	4 × 100W	4 × 100W	4 × 100W 8 × 100W	6 × 100W 8 × 100W

Power system	Small	Medium	Large	Large Wide
Solar choices	600W	600W 900W 1050W	600W 900W 1200W 1500W	1200W 1500W 1800W 2400W
Adjustable solar tilt, hand-crank	●	●	600W 900W	-
Adjustable solar tilt, electric actuator	-	-	1200W 1500W	●
Battery bank choices	(4) 4D AGM	(4) 4D AGM (8) 4D AGM	(4) 4D AGM (8) 4D AGM	(8) 4D AGM (16) 4D AGM
AC battery charger, 40-amp	●	●	●	●
MPPT solar charger	-	-	○	●
Extension cord for AC charger, 25 ft	○	○	○	○
Wanco Asset Tracker	○	○	○	○

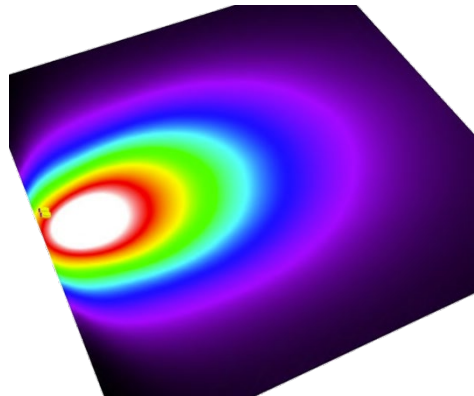
Control system	Small	Medium	Large	Large Wide
Manual on/off	●	●	●	●
Automatic on/off	●	●	●	●
Small NEMA control box	-	-	●	●
24/7 schedule timer	○	○	●	●
Master battery power switch	-	-	●	●

Trailer	Small	Medium	Large	Large Wide
Compact trailer	●	-	-	-
Extended front deck with raised step-up platform	-	-	●	●
Wide trailer with integral A-frame drawbar	-	-	-	●
Large storage box	-	-	-	●
Retractable rear bumper	●	●	●	-
Removable drawbar	●	●	●	-
Fold-up drawbar	○	○	-	-
Tow hitch for 2-inch ball	●	●	●	-
Lunette ring for 2½-inch pintle hook	○	○	-	-
Lunette ring for 3-inch pintle hook	-	-	○	●
Axle capacity				
single battery box	2000 lb	2000 lb	2000 lb	5200 lb
dual battery boxes	-	3500 lb	3500 lb	-
Dual axle capacity, each/total	-	-	-	3500/7000 lb
Hydraulic surge brakes	-	-	○	○

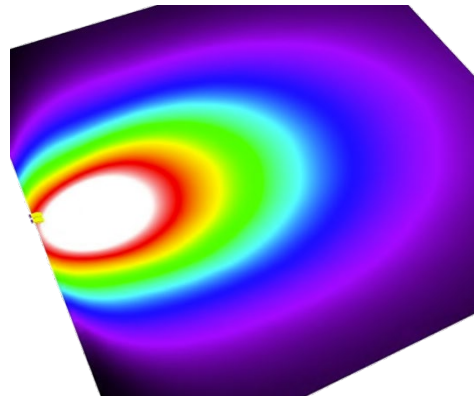
● Standard ○ Optional - Unavailable

Illumination

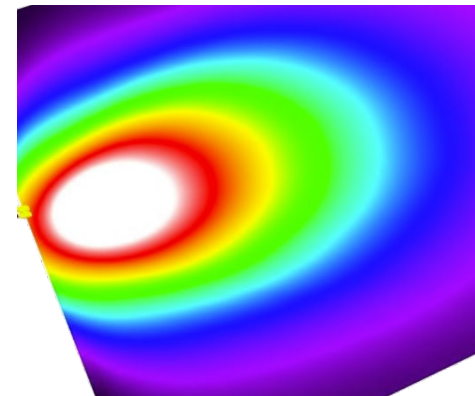
Light fixtures: 4 × 60W
Brightness: 34,428 lm total
Height: 20 ft



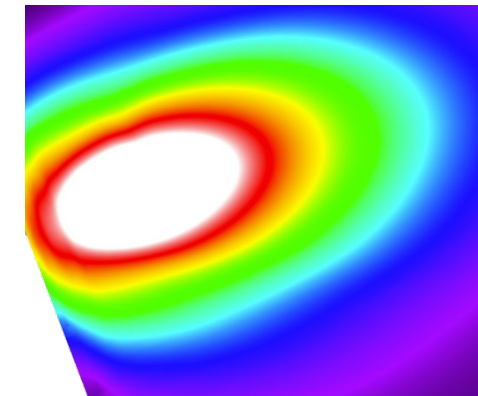
Light fixtures: 4 × 100W
Brightness: 54,836 lm total
Height: 20 ft



Light fixtures: 4 × 100W
Brightness: 54,836 lm total
Height: 30 ft



Light fixtures: 8 × 100W
Brightness: 109,672 lm total
Height: 30 ft

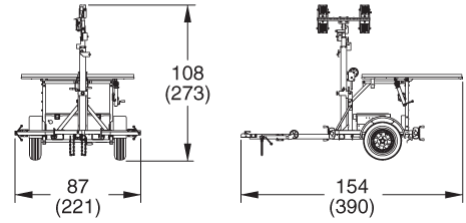


WANCO Solar Light Tower Dimensions

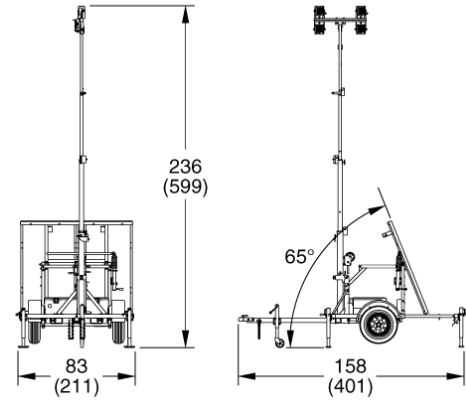
Small Model

inches
(cm)

Travel Position



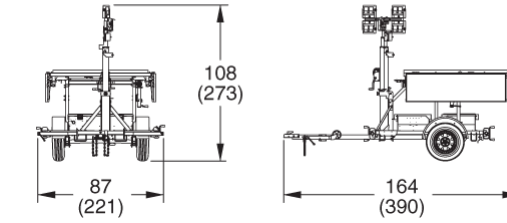
Deployed



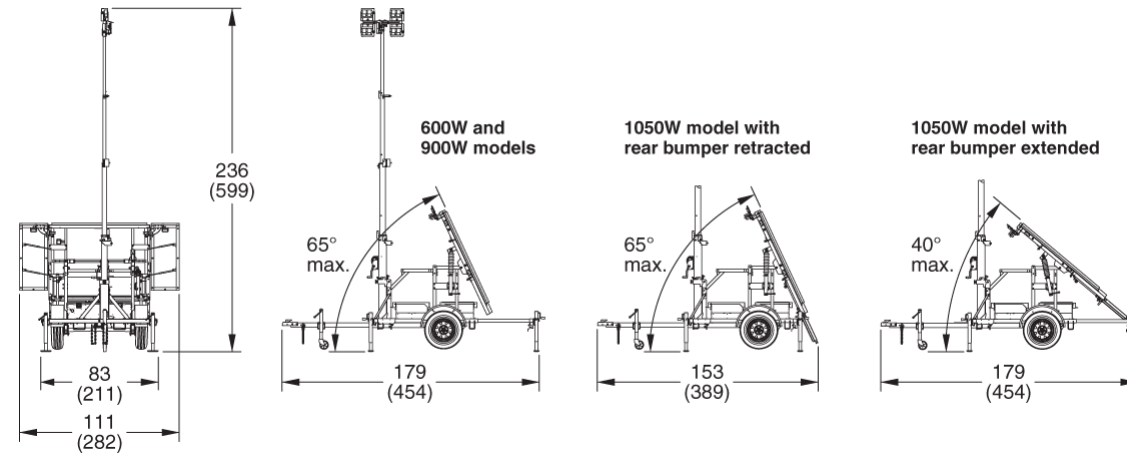
Medium Models

inches
(cm)

Travel Position



Deployed

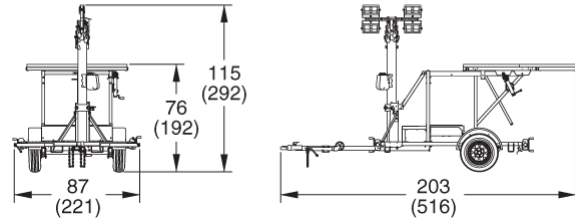


Large Models

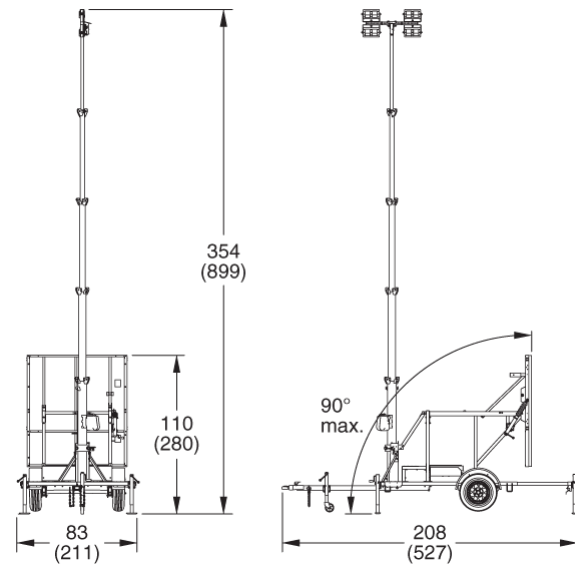
600-watt

*inches
(cm)*

Travel Position



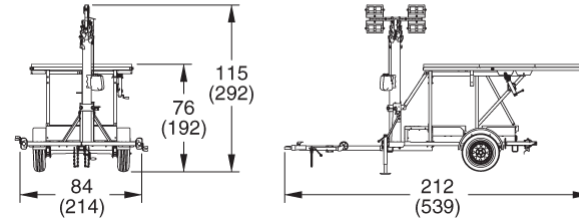
Deployed



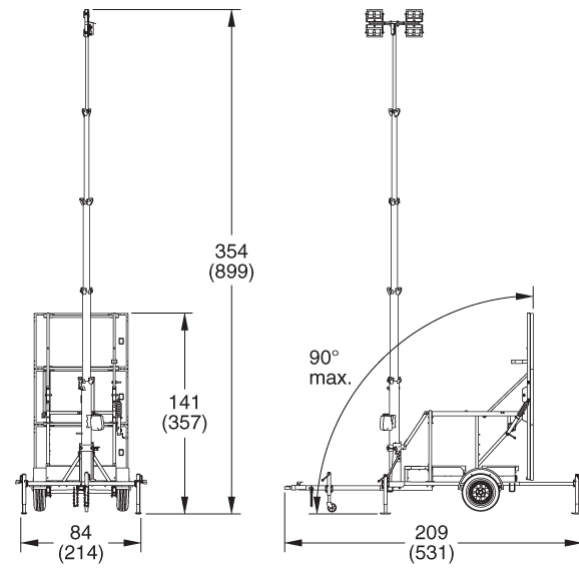
900-watt

*inches
(cm)*

Travel Position



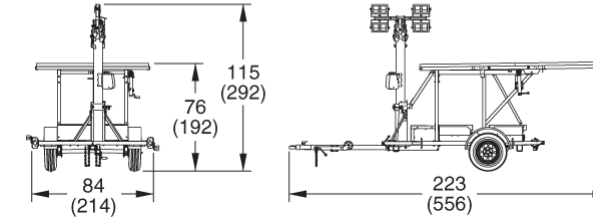
Deployed



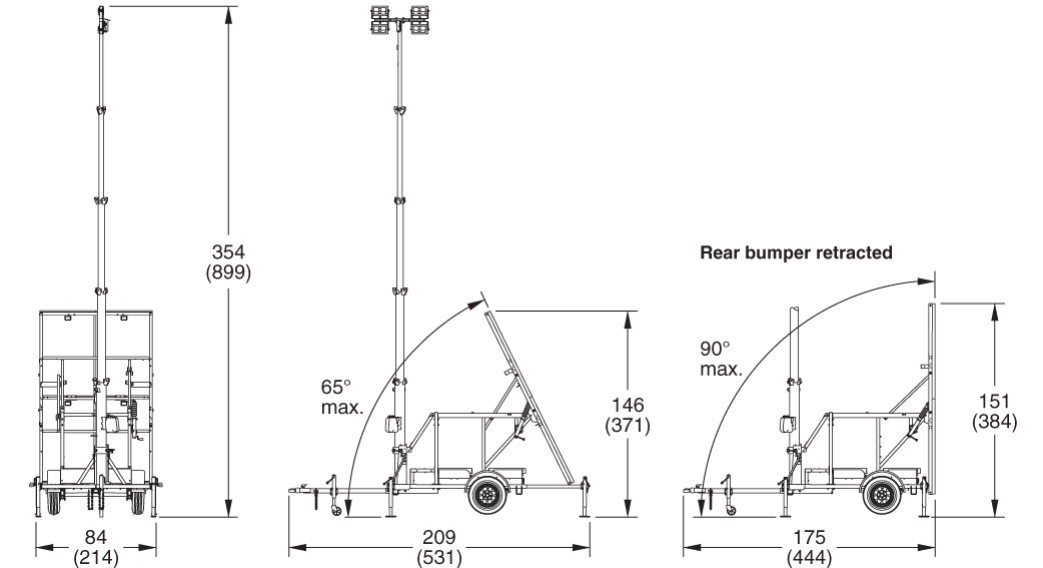
1200-watt

*inches
(cm)*

Travel Position



Deployed

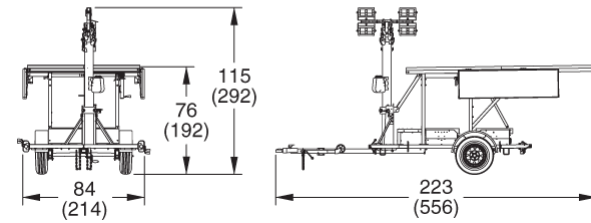


Large Models *(continued)*

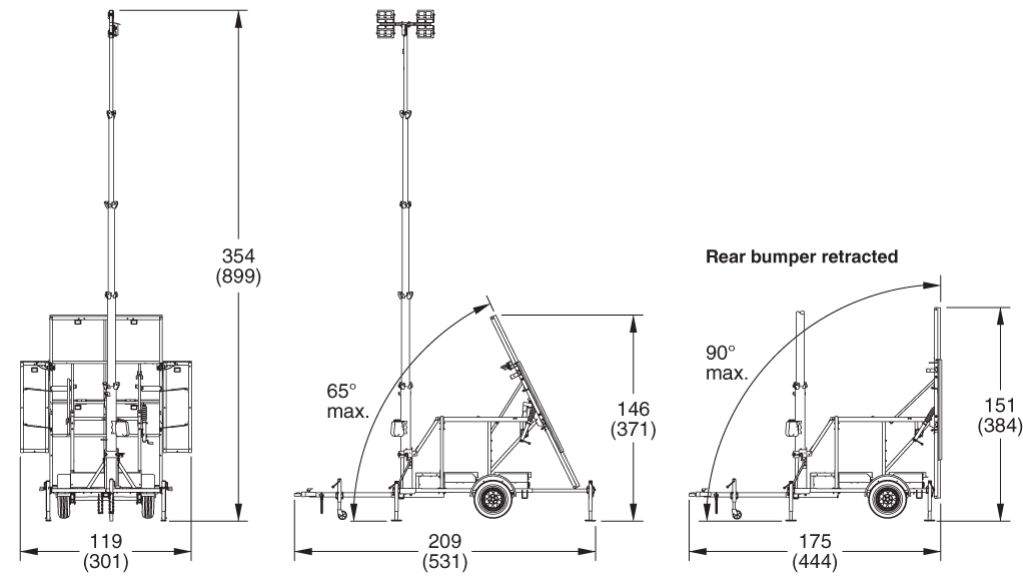
1500-watt

*inches
(cm)*

Travel Position



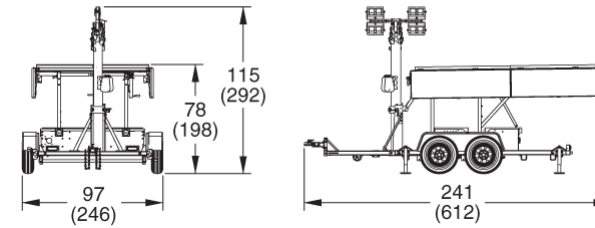
Deployed



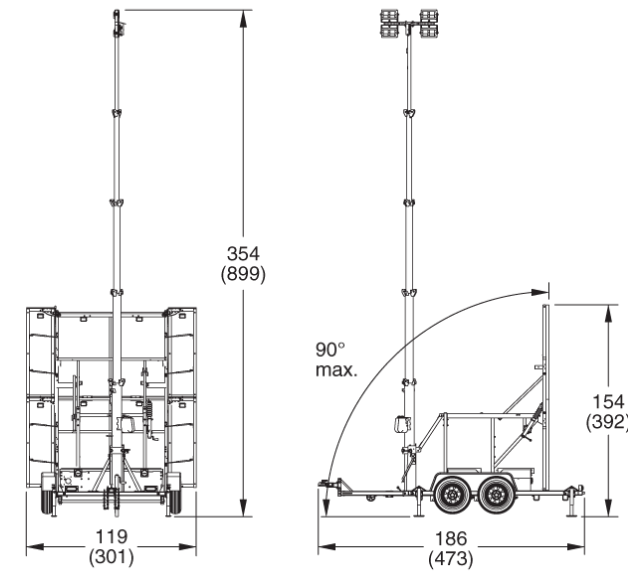
1800-watt wide-frame

*inches
(cm)*

Travel Position



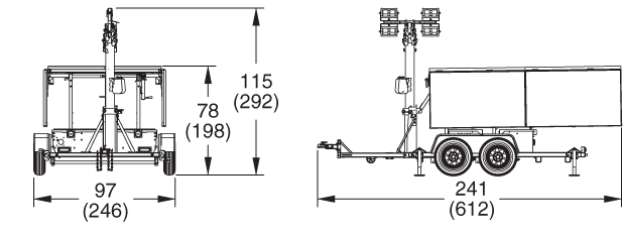
Deployed



2400-watt wide frame

*inches
(cm)*

Travel Position



Deployed

